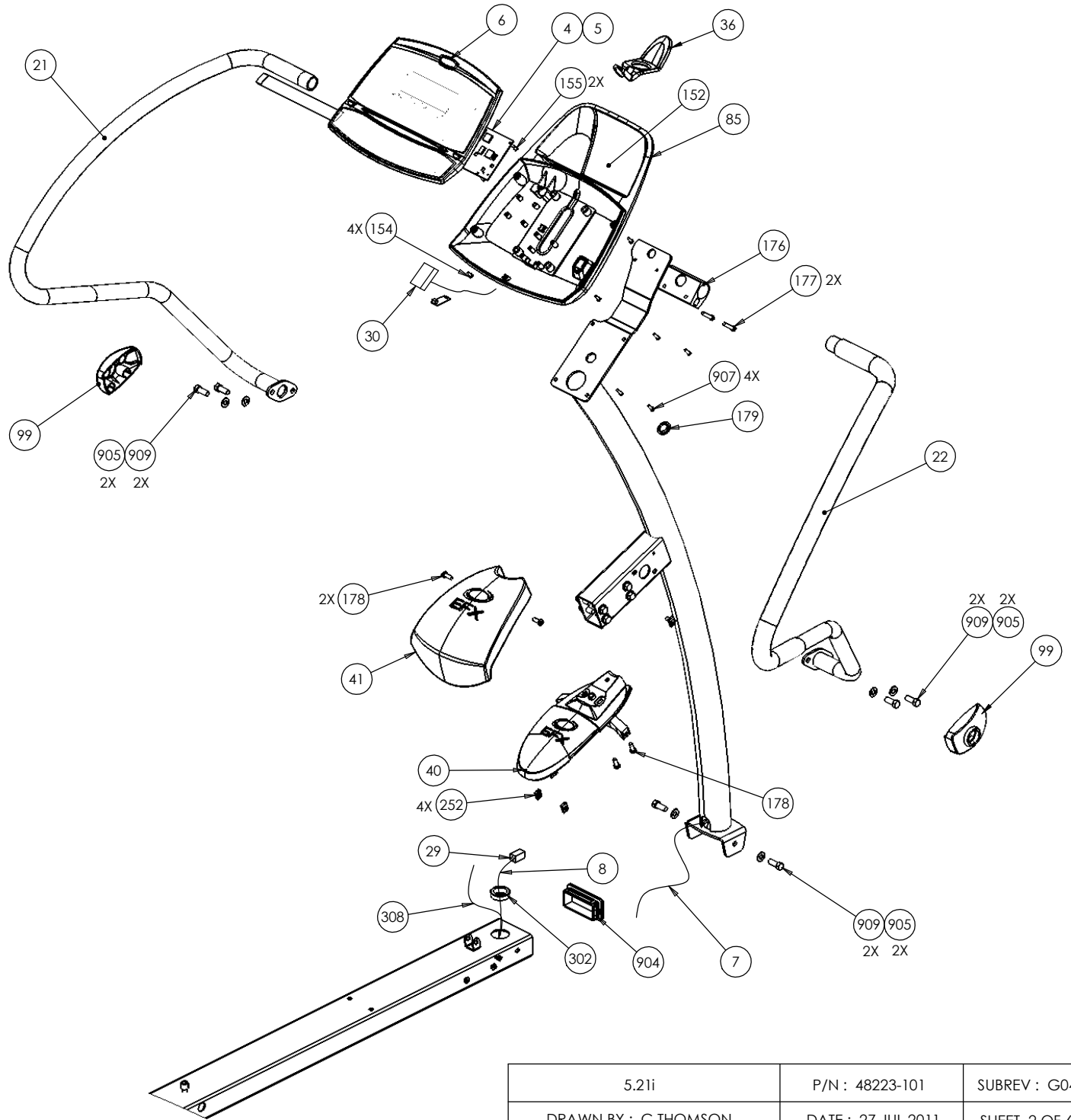
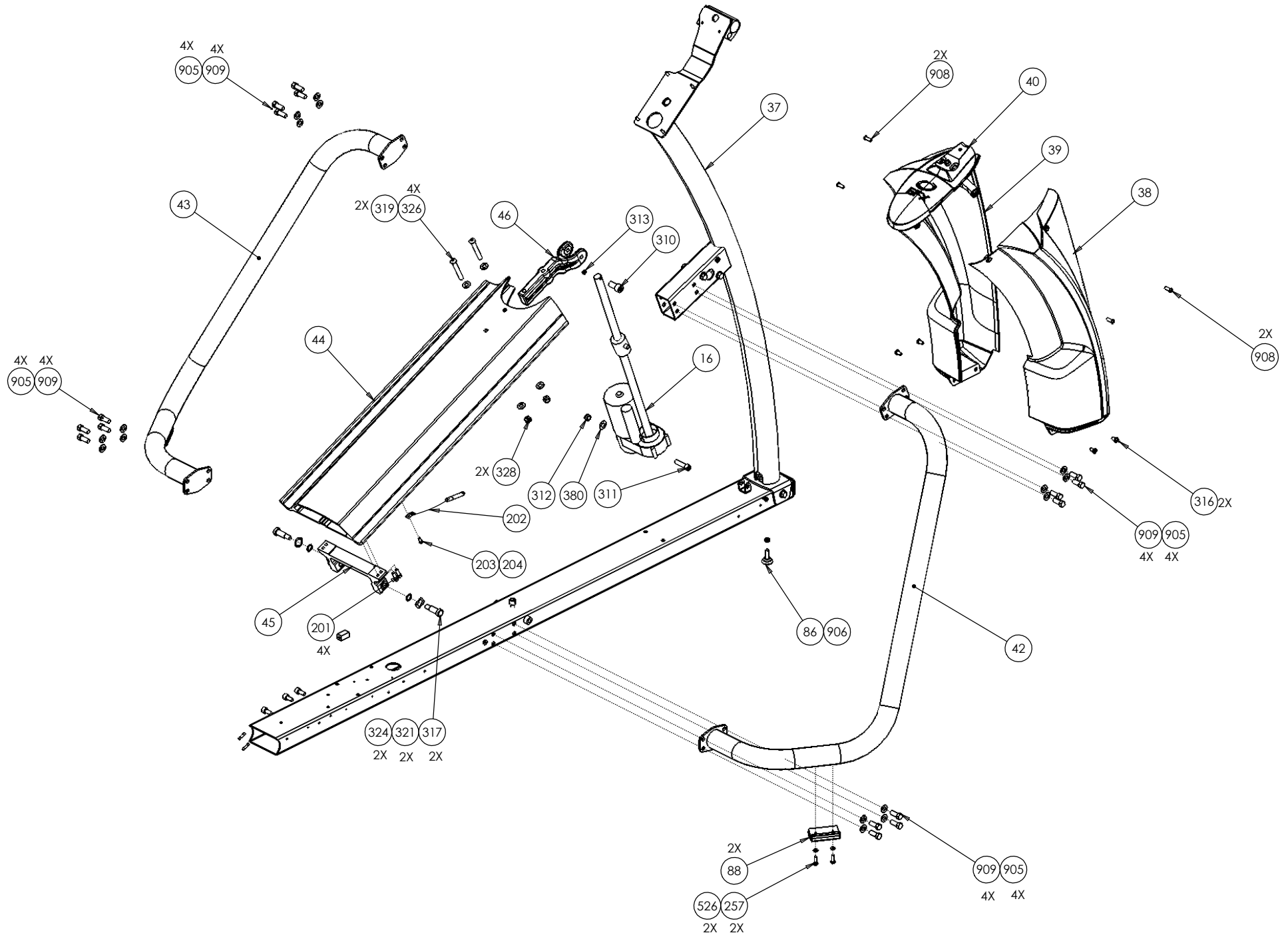


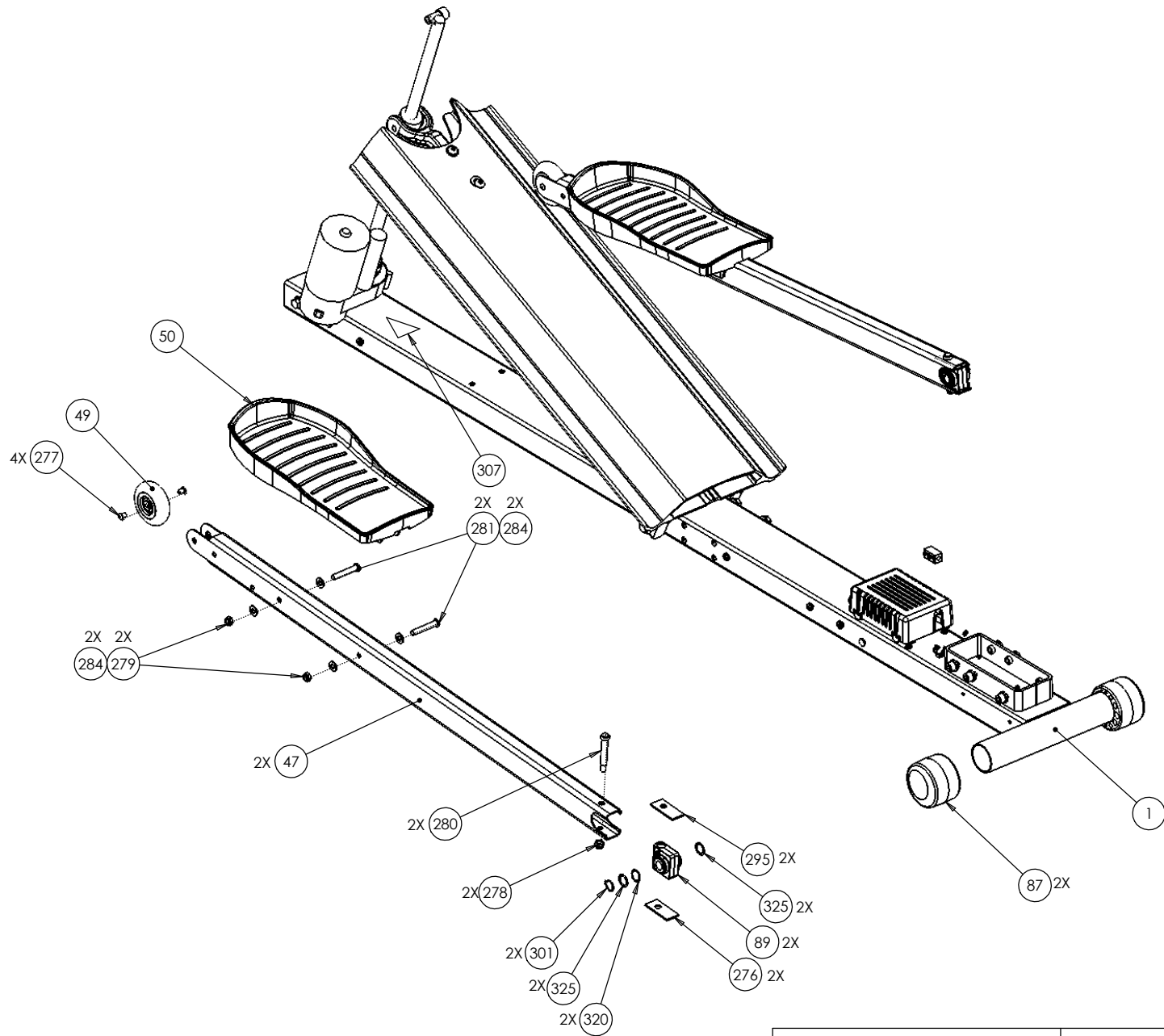
5.21i	P/N : 48223-101	SUBREV : G04
DRAWN BY : C THOMSON	DATE : 27 JUL 2011	SHEET 1 OF 6



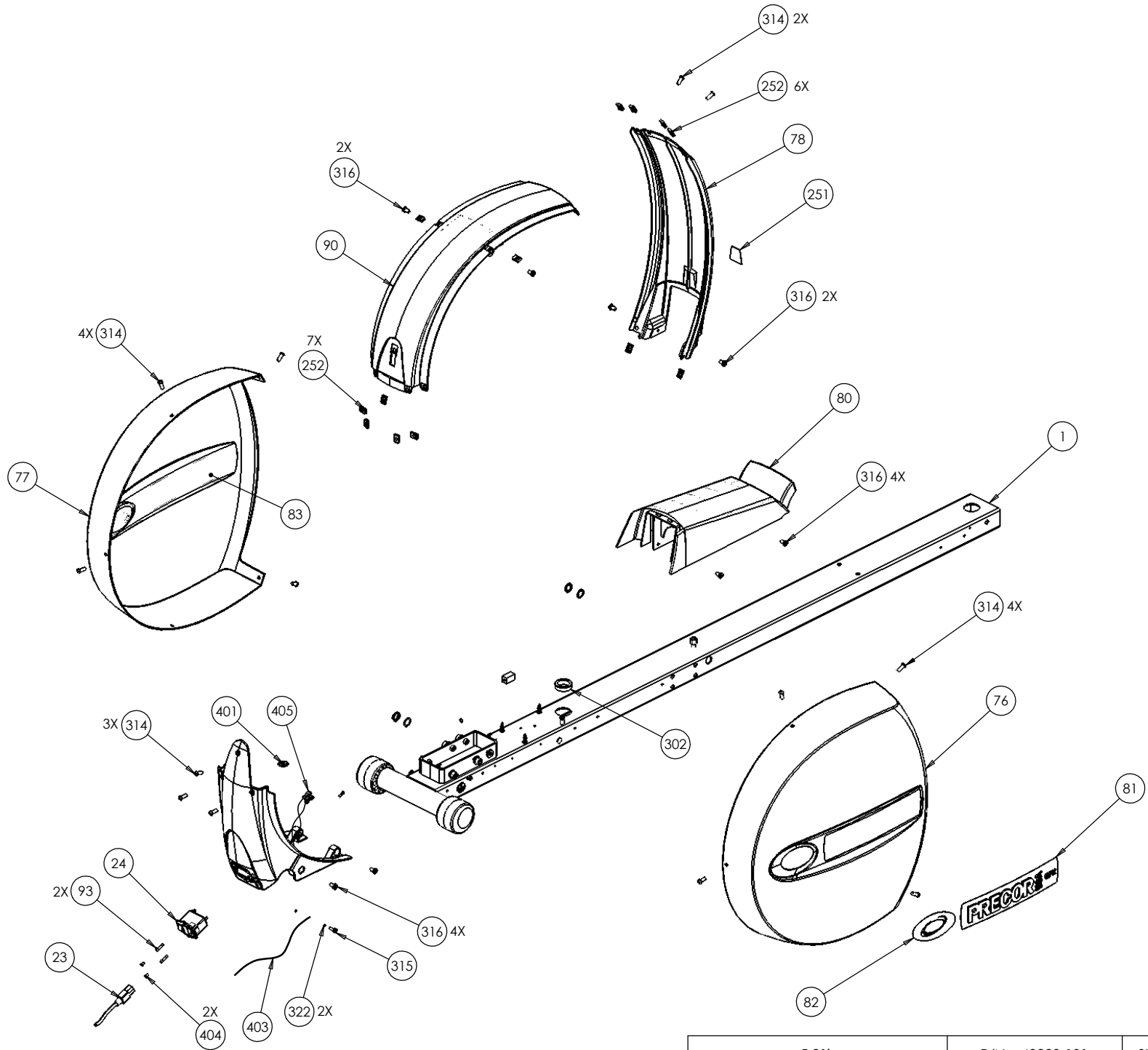
5.2ii	P/N : 48223-101	SUBREV : G04
DRAWN BY : C THOMSON	DATE : 27 JUL 2011	SHEET 2 OF 6



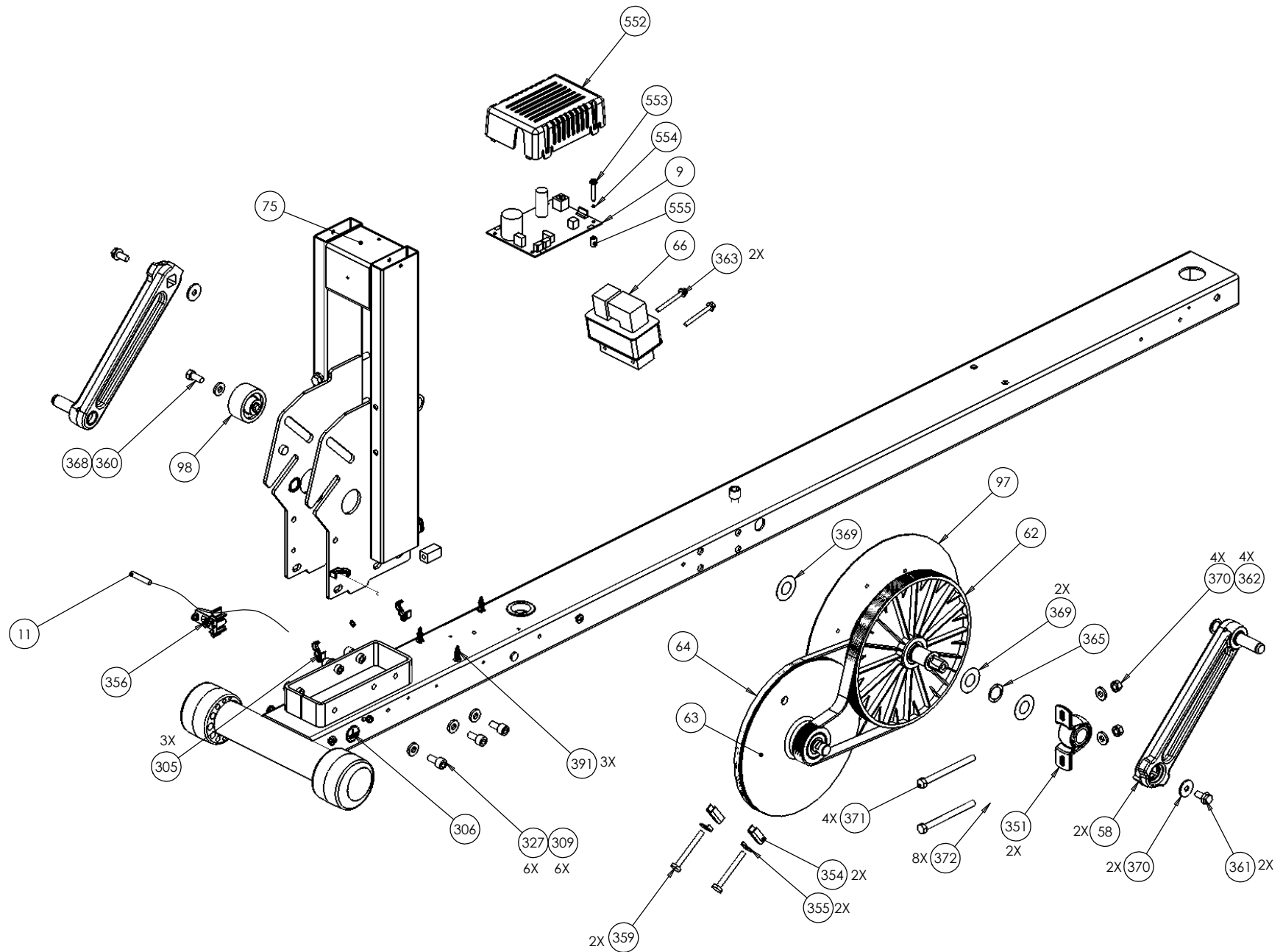
5.21i	P/N: 48223-101	SUBREV : G04
DRAWN BY : C THOMSON	DATE : 27 JUL 2011	SHEET 3 OF 6



5.21i	P/N : 48223-101	SUBREV : G04
DRAWN BY : C THOMSON	DATE : 27 JUL 2011	SHEET 4 OF 6



5.21i	P/N : 48223-101	SUBREV : G04
DRAWN BY : C THOMSON	DATE : 27 JUL 2011	SHEET 5 OF 6



5.21i	P/N : 48223-101	SUBREV : G04
DRAWN BY : C THOMSON	DATE : 27 JUL 2011	SHEET 6 OF 6

Bubble#	OEM Number	Description
7	PPP000000044905084	ASSY,CBL,MOD,8P8C,1-1,SILVER,84 in.
8	PPP000000044905072	ASSY,CBL,MOD,8P8C,1-1,SILVER,72 in.
23	PPP000000010392111	POWER CORD,125VAC,10A,8.0 FT
24	PPP000000012167102	PWR ENTRY MOD & FILTER,250VAC,W/2.5
29	PPP000000011415102	COUPLER,MOD,8P8C,INLINE,SNAP-IN
30	PPP000000029725101	RECEIVER, WIRELESS, HEART RATE, HIG
31	PPP000000038819103	TRANSMITTER, POLAR T34, HEARTRATE,W
49	PPP000000048337101	ASSY, STAIRARM WHEEL, CONSUMER EFX,
62	PPP000000010217130	BELT, DRIVE, POLY V (DAYCO 27-0628)
64	PPP000000010217131	BELT, DRIVE, POLY V (DAYCO 27-0627)
86	PPP000000011406103	FOOT, LEVELER, RUBBER BASE, 1.5 in.LG
87	PPP000000044916102	FOOT, ADJUSTABLE
93	PPP000000012223250	FUSE,TIME-DELAY,2.5A,250V,5X20MM
94	PPP000000011075105	FUSE,2.00A,250VAC,SLO,RAD,UL248-14
97	PPP000000044300104	ASSY, DRIVE INPUT, RETAIL
98	PPP000000038320104	IDLER,PULLEY
102	PPP000000012153101	FERRITE,CLAMP-ON,RND CABLE,28 MATL
154	PPP00000PMTN016050	SCREW,TCS,#8X1/2,PHIL,BLK SHARPERIZ
155	PPP00000MGCN016038	SCREW,MCH,8-32X3/8,PANHD,PHIL,
176	PPP000000037499103	CLAMP, HANDLEBAR,BLACK, PT
177	PPP00000CATN025125	SCREW,SKHD,1/4-20X1.25,BLK SHARPERI
201	PPP00000CATN025088	SCREW,SKHD,1/4-20X7/8,BLK SHARPERIZ
202	PPP000000011476102	PIN, RING, LOCKOUT
250	PPP000000012223250	FUSE,TIME-DELAY,2.5A,250V,5X20MM
252	PPP000000010136103	CLIP,U TYPE, TINNERMAN, 1/4-20
276	PPP000000048340101	SPACER, RAIL, URETHANE
278	PPP00000KDTN031025	LOCKNUT, FULL, 5/16-18,BLK SHARPERI
280	PPP00000FANN031200	SCREW,SHLD,5/16 X 2,HEXSC
284	PPP00000WEGN031007	WASHER, FLT, 5/16X.688X.065,SS, BLK
295	PPP000000048340102	SPACER, RAIL ,URETHANE, RED
301	PPP00000AAHN063003	RETAINING RING,EXTERNAL,.625,ROTOR

302	PPP000000010178112	BUSHING, SNAP
305	PPP000000012515101	CLAMP, CABLE, BLACK, RELEASABLE ON
306	PPP000000033984101	LABEL, SAFETY, GROUND SYMBOL
309	PPP00000CATN031075	SCREW,SKHD,5/16-18X0.75,BLK SHARPER
314	PPP00000TFIN025075	SCREW,BTHD,1/4-20X3/4,BLK SHARPERIZ
315	PPP00000PKCN019075	SCREW,S/T,#10X.75,WSHHXHD,ZN
316	PPP0000PANTN025050	SCREW,S/T,#1/4-20X1/2,PANHD,PHIL,TR
317	PPP00000RANN038125	SCREW,SHLDR,3/8 X 1 1/4 ,HEX
319	PPP00000TCNN038275	SCREW, BTHD,3/8-16X 2.75, SS
320	PPP0000WAGNN062001	WASHER,WAVE,OVERLAP,TRIPLE,.620,STL
321	PPP0000WAGNN048001	WASHER,WAVE,OVERLAP,TRIPLE,.480,STL
325	PPP00000WNNN063001	WASHER, FLT, 5/8X.880X.010
326	PPP00000WPNN038006	WASHER, FLAT, 3/8 X 1/16 THK,
351	PPP000000011245105	BUSHING,HEAVY DUTY PILLOW BLK
354	PPP000000037385101	BRACKET, TENSIONER
355	PPP0000000037855103	TAB, LOCKING
356	PPP000000047553102	RETAINER, SENSOR
360	PPP00000HCCN031075	SCREW, HEX HD, GRADE 5, 5/16-18 X .
362	PPP00000KGCN031027	LOCKNUT,STARWASHER,5/16-18,1/2
365	PPP00000WAHNN080021	WASHER,WAVE,NONSPLIT,.800,STL
367	PPP00000WNNN032009	WASHER,FLT, .321X1.00X.090 THK
368	PPP00000WBANN034013	WASHER,FLAT,ID=11/32,OD3/4,TH=.125,
369	PPP00000WNNN075001	WASHER,SHIM, .75X1.50X.010 THK
373	PPP00000AAHN078004	RETAINING RING,EXTERNAL,.781,ROTOR
401	PPP0000000037436101	LABEL, CHASIS NEUTRAL
404	PPP00000MNCN013031	SCREW, MCH,6-32X5/16,FLTHD,PHIL
526	PPP00000PKCN019075	SCREW,S/T,#10X.75,WSHHXHD,ZN
552	PPP0000000047774103	COVER, LPCA, 5.3X
553	PPP00000PKCN019125	SCREW,S/T,#10X1.25,WSHHXHD,ZN
902	PPP000000010186101	WRENCH, ALLEN, 5/32
903	PPP000000010186103	WRENCH, ALLEN, 3/16



906	PPP00000KPCN031019	NUT,HEX THIN,5/16-18,ZN
908	PPP00000TFTN025075	SCREW,BTHD,1/4-20X3/4,BLK SHARPERIZ